

BETHLEHEM LUTHERAN CHURCH
100TH ANNIVERSARY HISTORY ALBUM



*Your roots will grow down into God's love and keep you strong.
And may you have the power to understand, as all God's people should,
how wide, how long, how high, and how deep his love is. Ephesians 3: 17b -18 (NLT)*



Rev. William G. Hoffmann
Church Founder
1921



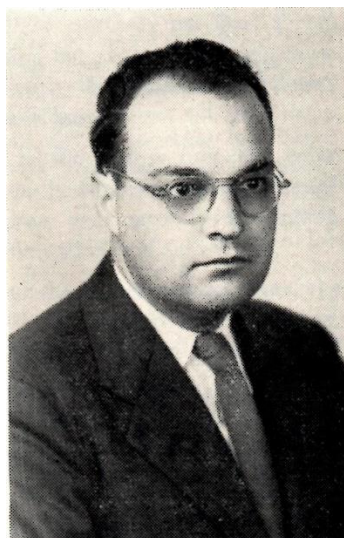
Rev. Henry D. Schulz
First Pastor
1922 – 1936



Rev. Claude E. Tejan
Pastor
1936 – 1944



Rev. Arnold H. Roesener
Pastor
1944 – 1947



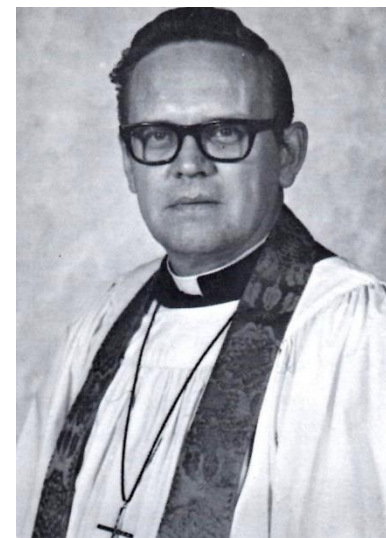
Rev. Wilbur Lindsley
Pastor
1947 – 1951



Rev. Donald G. Rehkopf
Pastor
1952 – 1957



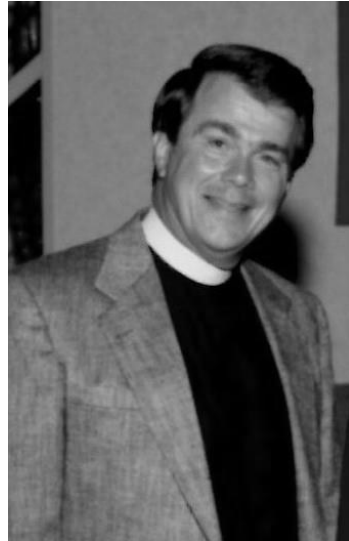
Rev. Dallas F. Adler
Pastor
1958 – 1966



Rev. Herman E. Jorgensen Jr.
Pastor
1967 – 1975



Rev. Albert R. Horn
Interim Pastor
1975 – 1977



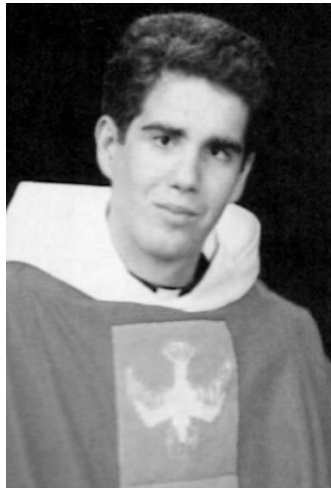
Rev. Dr. Kent H. Garner
Sr. Pastor
1977 – 2008



Laurie Skau
Intern Student from Colgate
Rochester Divinity School
1981



Doreen Duane
Intern Student from Colgate
Rochester Divinity School
1983 – 1987



Rev. Craig Satterlee
Associate Pastor
1987 – 1990



Rev. Julie Bergdahl
Associate Pastor
1991 – 1994



Jane Floy Nicholson
Associate in Ministry
1996 – 2003



Rev. Korey Finstad
Associate Pastor
2005 – 2012



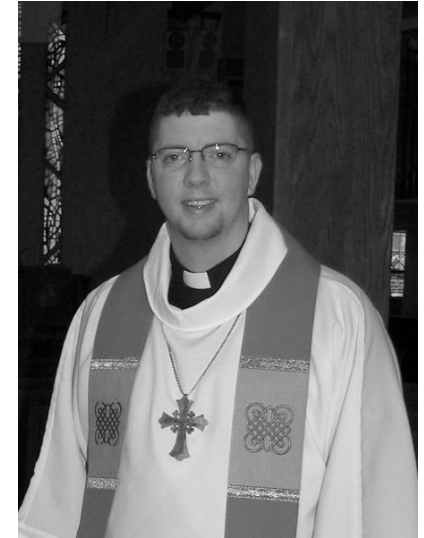
Rev. David Connor
Intentional Interim Pastor
2009 – 2010



Rev. Abigail Zang Hoffman
2010 – 2017 Sr. Pastor
2017 – present Co-Pastor



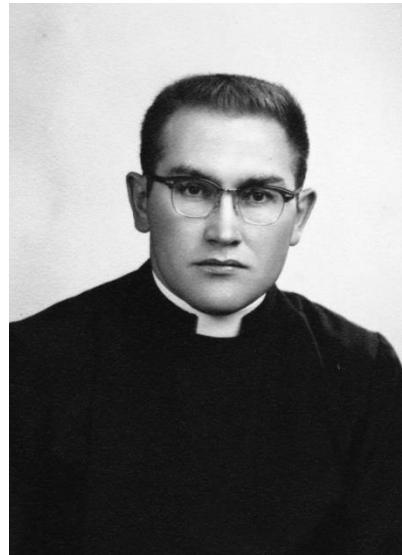
Rev. Paula E. Roulette
Interim Associate Pastor
2012 – 2013



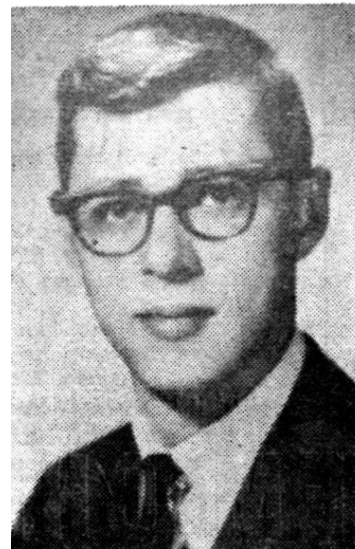
Rev. Gregory S. Brown
Associate Pastor
2013 – 2016



Rev. Amy E. Walter-Peterson
Co-Pastor
2017 – present



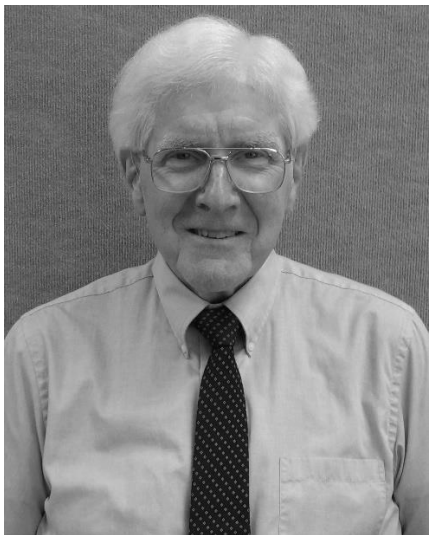
Rev. Richard Hembrock
Former BLC Member
Ordained 1959



Rev. Kenneth Sharp
Former BLC Member
Ordained 1966



Rev. Carl Adler (son of Rev.D.Adler)
Former BLC Member
Ordained 1972



Rev. Paul Adler (son of Rev.D.Adler)
Former BLC Member
Methodist Minister



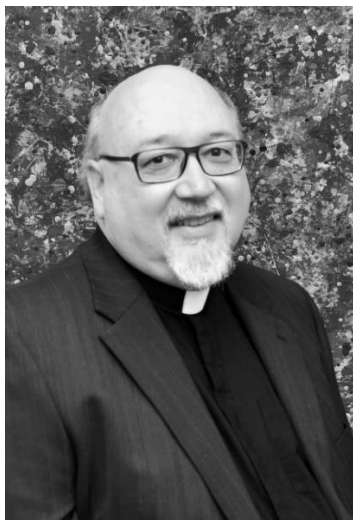
Rev. David Nevergall
Former BLC Member
Ordained 1994



Rev. Matthew M. Nickoloff
Former BLC Member
Ordained 2012



Rev. Lori B. Nickoloff
Former BLC Member
Ordained 2018



Wayne Shipman
Former BLC Member
Anticipated ordination 2020



Katie Kreutter
Director of Faith Formation
2017 – 2019



Mrs. Henry Schulz
Director of Choirs & Organist
1922 – 1936



Mike DiBiase
Director of Choirs & Organist
Before 1947



Katherine Hept Brown
Director of Children's Choir
Before 1947



Sarah Edith Brinkerhoff
Director of Cherub Choir
1954 – 1959



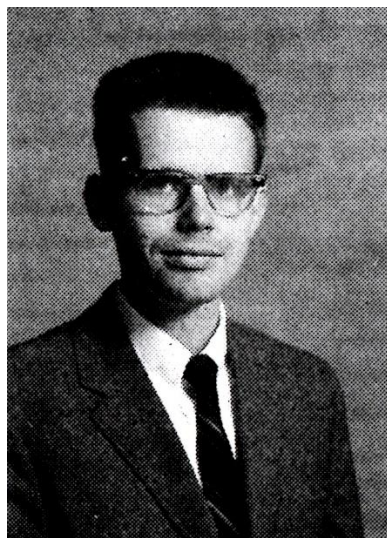
Marge Adler
Director of Adult Choir & Organist
1958 – 1966



Robert C. Meadows
Director of Choirs & Organist
1967 – 1968



O. Matthew Lyder
Director of Adult Choir
1969 – 1971



John Carl Vollbracht
Director of Choirs & Organist
1972 – 1975



Grace Murray Trebert
Director of Choirs & Organist
1976 – 1980



Mark Coffey
Director of Choirs & Organist
1981 – 1984



Karie Schroer Templeton
Director of Choirs
1984 – 1988



Cindy Lindeen Martin
Organist
1984 – 1988



Sarah Hawbecker
Director of Choirs & Organist
1988 – 1990



Catherine Rodland
Director of Choirs & Organist
1990 – 1992



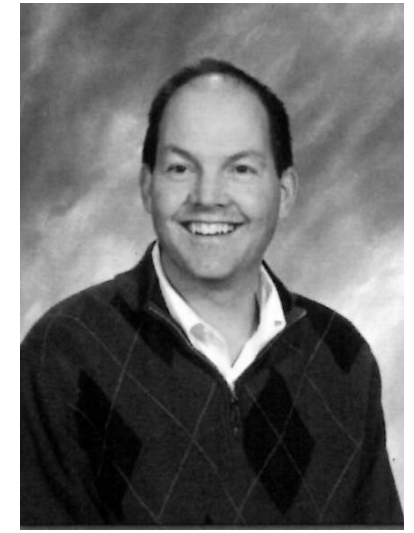
Susan DePasquale
Director of Cherub & Joyful
Noise Choirs & Organist
1992 – present



Dr. Kathy Grant Elwood
Director of Chancel Choir &
Bell Choirs
1992– 2003



Karen Bigenwald
Director of Bell Choirs
2002 – 2012



Dr. Brandon Johnson
Director of Chancel Choir
2003 – 2008



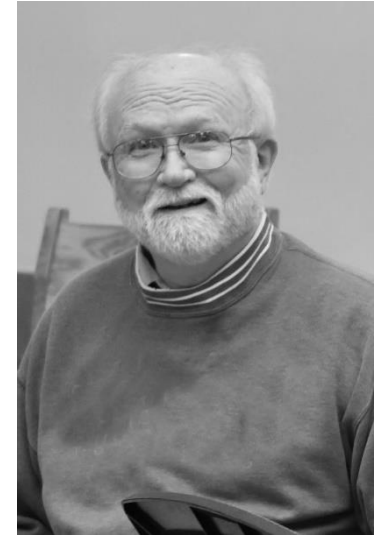
Jane Morale
Director of Cherub & Joyful Noise
Choirs
2007 – 2013



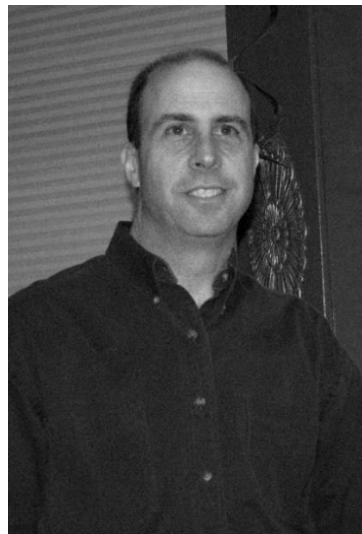
Dr. Jim Jefferis
Director of Chancel Choir
2008 – present



Annette Finkbeiner
Director of Cherub & Joyful
Noise Choirs & Bell Choirs
2013 – 2019
Replacement unknown at printing



Rich Towsley
Director of Folk Group &
Dulcimer Group
1990 – present



Andy Gates
Director of BLC Orchestra
2004 – present



Lucille Foust
Church Office Secretary
1968 – 1990



Ros. Siegel
Church Office Secretary
1984 – 1989 part-time volunteer
1990 – 2014



Beth Schoenfeld
Ministry Support Coordinator/
Office Manager
2014 – present



Bethlehem Lutheran Evangelical Church 1923



Bethlehem Lutheran Church & Sunday School Parish House 1960



Handicap Ramp to Parish Education Wing 1971



Bethlehem Lutheran Church 2001



Sanctuary 1932



Sanctuary 1985



Adult Choir 1923 – Mrs. Schulz, Choir Director



Men's Brotherhood 1923



Confirmation Class 1931 – Pastor Schulz



Luther League 1937



Confirmation Class 1938 – Pastor Tejan



Confirmation Class 1947 – Pastor Lindsley



Children's Choir about 1949



Confirmation Class 1955 – Pastor Rehkopf



Cherub Choir 1957 – S. Edith Brinkerhoff, Choir Director



Fourth of July parade float 1959



Choirs about 1959 – Marge Adler, Choir Director



Adult Choir 1960 – Marge Adler, Choir Director



Confirmation Class 1963 – Pastor Adler



Sunday School Christmas Program 1963



Choirs 1966 – Marge Adler, Choir Director



Sunday School Primary Opening Program in BLC House 1966



3rd Grade Sunday School 1966 – Carol Alvut, Teacher



Confirmation Class 1978 – Pastor Garner



Palm Sunday 1979 – Pastor Garner



Confirmation Class 1979 – Pastor Garner



Silver Bay 1984



Joyful Noise Choir 1994 – Susan DePasquale, Choir Director



Cherub Choir 1994 – Susan DePasquale, Choir Director



Youth Bell Choir 1997 – Kathy Elwood, Director



Journeys with Jesus 2001 – Chancel Choir – Kathy Elwood, Director



Chancel Bells 2002 – Karen Bigenwald, Director



Folk Group 2002 – Rich Towsley, Director



Fall Festival at Nicholoff farm 2007



Orchestra 2007 – Andy Gates, Director



National Youth Gathering in New Orleans 2009



Congregation from Evangelical Lutheran Church in Zimbabwe



Rosenbauer & Walkers at Zimbabwe Church 2010



Ladies' Retreat 2012



God's Work Our Hands 2016



LYO Work Campers Travel to Keansburg, NJ 2017



Quilters 2018



Outdoor Worship – Center Park



Confirmation Class 2019 – Pastor Hoffman & Pastor Amy

The Beginning...

In 1921 a small group of people living in Fairport and worshipping at Bethlehem Lutheran Church on Plank Rd. in Penfield wanted to form a church in Fairport because traveling to Penfield was often difficult. Interestingly, Bethlehem/Plank Rd. was begun in the 1880s when several families worshipping at Immanuel Lutheran Church in Webster, a place of worship in the German tradition, separated to establish their own local church for the same reason. On July 28 a meeting was called and a resolution was adopted to form a new Lutheran congregation in Fairport. By August 4, 32 people had signed the charter. The first worship service, led by Rev. William G. Hoffmann, pastor of Bethlehem/Penfield, was held on Sunday, August 7 with 95 people attending. On August 18 the newly-formed church, led by Pastor Hoffmann, became Bethlehem Evangelical Lutheran Church. On September 26, a call was extended to Rev. Henry D. Schulz, Bethlehem's first pastor; Pastor Schulz was installed on January 22, 1922. On July 29, 1922, the congregation of Bethlehem Evangelical Lutheran Church (BLC) was incorporated as a part of the Buffalo Synod.



Rev. & Mrs. Henry D. Schulz

1921 - 1936...

The newly-formed congregation met above Wagor Drug Store, one of the stores in the Bown Building, located at the time on North Main St. roughly opposite the current Village Hall.



Bown Building in downtown Fairport, 1965

On October 26, 1921 the congregation purchased the Jacobson property on West Church St. which would become the location of the new church. The cost of the property was \$1150; a total of \$1700 was pledged by members. Approval was granted to construct a permanent church building on February 12, 1922. Excavation began in May and construction on August 20 with a ceremony marking the laying of the cornerstone. A parsonage on Perrin St. was purchased in November. The completed church building and furnishings were consecrated and dedicated on March 11, 1923. Donations from members and other congregations allowed for the purchase of windows, a baptismal font, and a pipe organ. In 1932 the congregation undertook a project to remodel the sanctuary, enhancing it with an arched chancel, three stained glass windows, a manual organ, and a choir loft. The congregation worshiped in the basement until the renovations were completed. During this time the congregation purchased the property at 40 Perrin

St. to be used as the parsonage. In 1936, after serving Bethlehem for 15 years, Pastor Schulz accepted another call. The congregation then extended a call to recently-ordained Rev. Claude E. Tejan who was installed as Bethlehem's second pastor on June 21.

1936 - 1952...

By this time, The Ladies Aid Society and the Men's Brotherhood, formed in 1921, were very active. The youth of the church were involved in the Young People's Society, which later became known as Luther League. By 1941 BLC had grown to 310 baptized members. Four officers and nine teachers oversaw the Sunday School program which had an enrollment of 150. The Cradle Roll was established and Vacation Bible School began. In 1944, Pastor Tejan accepted a call to a church in Pittsburgh, PA. Rev. Arnold H. Roesener was called and led BLC until 1947. Rev. Wilbur Lindsley was then installed, serving until 1951.



Rev. Lindsley & family

1952 - 1966...

In 1952, Rev. Donald G. Rehkopf came to Bethlehem. Within a few years, membership increased to 440 baptized members. Sixteen teachers and a busy staff led a Sunday School of 85 children. Following a lapse due to WWII, Vacation Bible School was reinstated with 102 children attending. In 1953, the home next to the existing parsonage was purchased to

serve as the residence for Pastor Rehkopf and his family; the former parsonage was later sold. In 1955, the large corner house was purchased to serve as a Parish House, providing space for Sunday School, meeting rooms, and offices. During this time, the church basement was remodeled. In addition, new furnishings, hymnals, and carpeting were purchased. Due to the growing membership, a second worship service was added. Pastor Rehkopf served BLC until 1957. In 1958, Rev. Dallas F. Adler, wife, Marge, and five sons came to Bethlehem.



Rev. Dallas Adler & family

Membership continued to increase. A library was established and a parish paper begun. The church music program was enriched by Mrs. Adler's talent and leadership. A Girls' Choir and Junior Mission Band were formed. In 1961, a new side entrance was built, new bathrooms were added, and the kitchen remodeled; improvements were made to the lighting and floor in the basement. In 1960, Bethlehem became a part of The American Lutheran Church (TALC). Pastor Adler served until 1966 when he and his family relocated to Akron, NY.

1967 – 1977...

Rev. Herman B. Jorgensen was called in 1967. At this time, BLC voted to give future pastors a housing allowance and rent the parsonage to provide additional income; Pastor Jorgensen and his family purchased a home near Fairport High School. Within two years the three parcels of land

were merged into one unit in anticipation of a building program. In 1969, plans were established to construct an education and office wing, as well as a handicap access ramp which was a first for the community. In 1970-71, the Parish House and the parsonage were torn down. The present education wing was completed on September 21, 1971. Sunday worship was at 8:30 and 10:45 am, with Holy Communion on the first Sunday of the month. Groups meeting regularly were Adult Fellowship, American Lutheran Church Women, Couples Club, Senior Citizens, and Luther League. Pastor Jorgensen left BLC in 1975. Following two years, during which Rev. Albert Horn served as interim pastor, Rev. Kent Garner became BLC's new pastor in November 1977.

1977 to 2010...

Pastor Garner and family arrived in Fairport to begin a ministry that emphasized worship, music, prayer, and education, along with outreach, and mission. Plans for a high school Sunday School class and a Shepherd program as well as property improvements were soon underway. Fellowship Hour and Adult Education were begun. Reaching out to shut-in members as well as those not regularly attending became priorities. Staff training was emphasized and increased participation in maintaining the church property was encouraged.

By the early 1980s, BLC was a warm, friendly congregation, a "People of Prayer." Membership was close to 750, with 450 worshipping regularly. The Sunday School and confirmation programs were large and active. A Mentor program was begun for catechism pupils; other programs for youth were also started. Search Bible Studies were added to our educational curriculum and Vacation Bible School was held each summer. To add flexibility for the summer months, a worship schedule was offered with services on both Thursday evening and Sunday morning. One of the biggest challenges came in 1982, when the

building underwent a major remodel and restructuring of the sanctuary, rotating it 90 degrees to the west. In 1983, Yan Rieger designed and created twelve carved wooden plaques, representing the twelve original Apostles. These plaques were mounted on the altar rail and remain there today. In 1984, A. David Moore of Vermont was commissioned to design and hand-build a new tracker pipe organ, emphasizing our commitment to music; installation was completed on July 18, 1985.



A. David Moore & Pastor Garner

The remodel also included a new altar and furnishings as well as stained glass windows in the apse behind the altar. These windows were designed and created by BLC members, Genia and Jack Kellow.

At this time, emphasis was placed on hospitality and greeting the stranger. Members were asked to use the Village Landing parking lot to enable visitors to park closer to the church. We helped to adopt the Homsombath family from



Homsombath Family 1979

Laos by supplying furniture, clothing, and support. Heidi and George Bender opened their home to this family of seven, where they lived for several weeks while awaiting settlement in their permanent housing.

Rev. Craig A. Satterlee began serving part-time in 1987 and was made full time Associate Pastor the following year.



Pastor Craig A. Satterlee

In 1988 the ALC merged with two other Lutheran church bodies to form the Evangelical Lutheran Church in America (ELCA) of which BLC is a member. Advent House opened in 1988. BLC was extremely instrumental in its concept and birth but it has always been a community-wide ecumenical project for the terminally ill.

A "Seeds" program was started for those with intellectual and developmental disabilities. Confirmation classes were also offered for those with special needs. Pastor Satterlee left BLC and Rev. Julie Bergdahl was called as Assistant Pastor in the fall of 1991, serving until 1994. In 1994 a new entrance on Perrin Street was added along with an electric elevator to make our church building more accessible. The Fellowship Hall was refurbished with volunteer help from members. In 1996, Jane Floy became our Associate in Ministry, serving until 2003.

As we continued to grow, our budget did as well, allowing us to minister to others beyond our walls.

A gift of \$10,000 was sent to St. Timothy's Lutheran Church in Geneseo, a mission church that was partially constructed by BLC members along with volunteers from other congregations. Other organizations that we supported were St. John's Home, Inner City Ministries, Battered Women, and Safe Journey. The Chancel Choir under the direction of Dr. Kathy Grant Elwood took their "Journeys with Jesus" musical programs out into senior living facilities to present to the residents. Under the musical direction of Dr. Elwood and stage direction by Bob Stock, they performed "Joseph and the Amazing Technicolor Dreamcoat" in both 1998 and 2003.



1998 Production of Joseph & the Amazing Technicolor Dreamcoat

During the years between 1995 and 2001, the congregation grew to over 800 members. A 6,000 square-foot addition was completed, which included a new, expanded narthex incorporating stained glass windows and the altar and communion rail from the original church, tying the old and new together. Classrooms, library, nursery, Sacristy, and a new entrance were also added. On September 9, 2001, Pastor Garner and Associate in Ministry Jane Floy led the dedication of the new addition. In 2005, Rev. Korey Finstad began serving in the role of Associate Pastor. A three-year capital campaign begun in 2007 funded the final expansion of our building, adding office space, meeting rooms, a waiting room, and a bell storage room. Pastor Garner retired on Nov. 1, 2008, presiding over his final service on All Saints'

Sunday, the same festival Sunday that he led his first service in 1977. He served BLC faithfully for 31 years and was its longest tenured pastor.



Pastor Kent Garner

Following Pastor Garner's retirement, Pastor Korey remained at BLC, providing consistency and guidance as we worked through the many changes occurring at this time. Rev. David Connor served as the intentional interim pastor from January 2009 until May 2010. At Pastor Connor's suggestion, we began offering Holy Communion weekly throughout the Easter season. This practice was later expanded to the entire year. Throughout this time of transition, fellowship opportunities were emphasized to encourage a feeling of family during this difficult period. Breadbreakers was begun as a way to offer small-group relationship building.

2010 to 2021...

By the grace of God and the guidance of the Holy Spirit, Rev. Abigail Zang Hoffman was called to serve as BLC's Senior Pastor, beginning her ministry on September 20, 2010. At that time, our membership was 840 baptized and 720 confirmed members. Her first priorities, following a period of "getting to know you," were discerning God's vision for us at this

point in time and developing a plan for what stewardship really means and how we live it out. In worship, we began a combined Easter Vigil service with Fairport United Methodist Church



Easter Vigil 2014

and candle lighting stations to remember loved ones on All Saints' Sunday.



Lighting Candles All Saints Sunday

In 2010 BLC members Lisa Rosenbauer and Rick and Beth Walker joined a group from the Upstate NY Synod in traveling to Zimbabwe to visit our twinned parish in Shurugwi, strengthening our ties with our sister congregation. In 2012 we were blessed with a surplus of funds from the previous year. Through open forum meetings we were presented with many new and creative ideas and opportunities to serve others beyond our walls and into the wider community, many of which were realized.



Lisa Rosenbauer in Zimbabwe

Our youth demonstrated a strong commitment to being the hands and feet of Jesus by serving others through participation in annual summer work camps and the ELCA triennial National Youth Gathering. Through generous contributions and 0% loans from some of our members, the mortgage on our building was paid off, giving us a reprieve from payments for 2011; the loans were repaid beginning in January 2012.

In March 2012 Pastor Korey accepted a call to serve at Christ the King Lutheran Church in Denver, CO. Rev. Paula E. Roulette joined the staff on a month-to-month basis to provide support until a new Associate Pastor could be called. Pastor Paula brought with her a warm presence and nurturing grace. Her skills, experience, and gifts enabled us to continue to grow in faith and discipleship.



Pastor Korey



Pastor Paula

During this time, BLC was asked to take the role of Fiscal Agent for the South Wedge Mission, a Mission Start of the ELCA in the South Wedge district of Rochester. Rev. Matthew Nickoloff, a son of BLC, was called to be the pastor of the developing mission. BLC accepted the role as a way to serve the local community as well as the wider church. Our financial support and advisory role for the South Wedge Mission continues today.

BLC began a vision process which culminated in our five purpose statements – Worship the Living God, Grow in Faith and Discipleship, Live Our Faith in Daily Life, Care for One Another, and Serve Our Neighbor. At the same time, we claimed our vision statement – to equip every child of God to follow Jesus. These statements give us guidance and clarity about God's call for this community of faith. The adoption of these statements resulted in the establishment of the Core Ministry Team to ensure that all of our vital ministries are cared for and connected to the whole congregation. The role of council members was changed from liaisons to support for the ministry of the whole church. An emphasis was placed on discipleship - what it looks like, what it means to be a disciple of Jesus and how we live into that call.

In August 2013, Rev. Gregory S. Brown began his ministry in the role of Associate Pastor. Pastor Greg, a chaplain in the Army National Guard, was given the support of the congregation in order to fulfill both his military and BLC ministerial responsibilities. His primary area of involvement was Christian Education – exploring ways to grow our faith and live as disciples of Jesus. Accepting a call at St. Stephens Lutheran Church in Hickory, NC, Pastor Greg left in April 2016. A capital campaign allowed replacement of the existing elevator with a platform lift, providing safer and more reliable service for those needing it. Also



Pastor Greg & George and Nancy Feth

included were repairs to the retaining wall and stairs in the courtyard.

In 2016, BLC committed to a team ministry model, meaning the congregation, the pastors, and other staff members work alongside each other as servant leaders to expand the ministries of the church and meet the needs of others. This model called for two Co-Pastors and a Director of Faith Formation, all serving on a part-time basis, allowing us to focus on our vision and mission and the ministries that support them rather than on the individual leaders. In 2017, Rev. Amy Walter-Peterson joined BLC as Co-Pastor, sharing equal responsibilities with Pastor Hoffman.



Pastor Amy & Pastor Hoffman

Together they lead us in faith-filled service and ministry as we seek to equip every child to follow Jesus and instilling in both children and adults the pillars of faith found in our baptismal promises. The third member of team ministry model was hired on December 1, 2017, when Katie Kreutter

became our Director of Faith Formation. Katie served until May 2019.

As we mark 100 years as a people of God, we celebrate the past and all those who so faithfully served to lay the foundation for this community of faith. We also look to the future with great anticipation as we envision where the Holy Spirit might be leading us. Trusting in God's grace, BLC will move forward in faith with joy and confidence in being God's chosen people in this place.



Rooted in Christ - Growing in Faith - Sharing His Love

100th BLC Anniversary Planning Committee

- Bob Anderson
- Matt Beutel
- Vicki Beutel
- Donna Berner
- Jim Berner
- Sherry Cook
- Jane Morale
- Bob Stock - chairperson
- Phyllis Stock
- Celia Topping
- Doug Topping
- Sue Towsley
- Glen Zagorski

The committee started planning our anniversary in December 2018. They worked to establish over 70 events and activities for our BLC members, friends and community to experience and enjoy! Thirteen of the seventeen living clergy of BLC are returning to preach and preside at worship. All twelve of the living musicians that supported BLC over the years will be participating in our anniversary celebration. This committee has worked hard to make this anniversary celebration worthy of the BLC membership and worth remembering. Congratulations for a job well done and thanks to them all for their time and talents!

Sincerely,
Bob Stock

Anniversary Theme:

Rooted in Christ - Growing in Faith - Sharing His Love

Anniversary Bible Verse:

Ephesians 3: 17b -18 NLT

Album Creators

- Sherry Cook
- Darcy Geddis
- Connie Specht
- Bob Stock
- Celia Topping - chairperson

Save the Date...

BLC 100th Anniversary Calendar of Events

<p>August 2021 8th Homecoming Service – combined worship with BLC Penfield at Plank Rd church pavilion 10am – reception to follow – Rev. Korey Finstad presiding *15th Bishop John Macholz presiding</p> <p>September 2021 Count down slideshow on monitors Family photos for directory</p> <p>October 2021 Count down slideshow on monitors Family photos for directory</p> <p>November 2021 *14th Rev. Gregory Brown presiding *14th Dr. Catherine Rodland – organ prelude & postlude Commissioned anniversary hymn, anthem & children’s song 14th Welcome Back Reception 21st Rev. David Nevergall presiding 21st Welcome Back Reception Interactive Self-paced BLC Programs on computer stations in Narthex Display of BLC Docs, CDs, Woven Throw to order in Narthex BLC History Albums available – 1 per family Shut-In Activities will occur each month Send Anniversary documents & keepsakes to Zimbabwe Family photos for directory</p>	<p>February 2022 *6th Rev. Matthew Nickoloff presiding 6th Welcome Back Reception 12th Pot Luck Dinner & Trivia Night 6pm – showing of BLC member interview trailer 27th BLC History Presentation between services Old documents & photos in Narthex Display of BLC Docs, CDs, Woven Throw to order in Narthex BLC History Albums available – 1 per family</p> <p>March 2022 18th Tri-Congregational Event 7pm – music, history & worship *20th Rev. Paul Adler presiding *20th Sarah Hawbecker – organ prelude & postlude 20th Welcome Back Reception Pastors/Staff photos in Narthex Take orders for Commemorative DVDs</p> <p>April 2022 1st Showing of Joseph 7pm *3rd Rev. Dr. Kent Garner presiding *3rd Dr. Mark Coffey – organ prelude & postlude *3rd Dr. Brandon Johnson directs Chancel Choir 3rd Welcome Back Reception 10th Anniversary Tree Planting between services 24th Rev. Theodore Schulz presiding 24th Welcome Back Reception</p>	<p>May 2022 *1st Rev. Richard Hembrook presiding 1st Welcome Back Reception 8th Rev. Jane Nicholson presiding 8th Karie Templeton directs Chancel Choir 8th Welcome Back Reception 15th Congregation Anniversary photo taken between services 22nd Rev. Wayne Shipman presiding – council presents BLC vision for future 22nd Welcome Back Reception Quilts Display & Confirmation photos in Narthex Take orders for Commemorative DVDs</p> <p>June 2022 4th-5th Canal Days – BLC game booth & drinks/restroom at church 12th Rev. Julie Bergdahl presiding 12th Dr. Kathy Elwood directs Chancel Choir 12th Dr. Cindy Lindeen-Martin – organ prelude & postlude 12th Welcome Back Reception *19th Closing Anniversary Service Co-pastors presiding Commissioned hymn, anthem & children’s song –Outdoor Worship/Picnic – Center Park 26th Scavenger Hunt after service BLC Ministries & Outreach photos & Living Collage/Timeline in Narthex</p> <p>July 2022 4th of July Parade – BLC Float</p>
---	---	--

<p>December 2021 *5th Rev. David Gerhardt presiding BLC musicians & music group photos in Narthex Display of BLC Docs, CDs, Woven Throw to order in Narthex BLC History Albums available – 1 per family Family photos for directory</p> <p>January 2022 *9th Rev. Lori Nickoloff presiding 9th Welcome Back Reception 23rd Rev. Jeff Hedin presiding 23rd Open Time Capsules & BLC History Presentation between services BLC Buildings & Renovations photos in Narthex Display of BLC Docs, CDs, Woven Throw to order in Narthex BLC History Albums available – 1 per family Family photos for directory</p>	<p>29th Prism Concert by BLC musicians 7pm Joseph display in Narthex Take orders for Commemorative DVDs</p> <p><i>NOTE: Co-pastors will preach & preside at all Thursday evening services all summer</i></p> <p><i>*Denotes monthly Anniversary Service</i></p> <div data-bbox="856 462 1123 657" data-label="Image"> </div>	<p>Living Collage/Timeline in Narthex Family Photo Directory with Anniversary Photos & Commemorative DVD available</p>
--	---	---



BETHLEHEM LUTHERAN CHURCH

48 Perrin Street, Fairport, NY 14450

Church Office: 585-223-0634

Email: office@blcfairport.org

Website: www.blcfairport.org

Facebook: <https://www.facebook.com/BLCfairport/>

Disclaimer: This BLC History Album contains the photos and information available at the time of printing in Dec 2019. We have done our best to be inclusive and present accurate information. If you find any mistakes, please notify the church office so it can be corrected for the future.



**Evangelical Lutheran
Church in America**

God's work. Our hands.

©Bethlehem Lutheran Church, 2019