

Old BLC Photographs and History

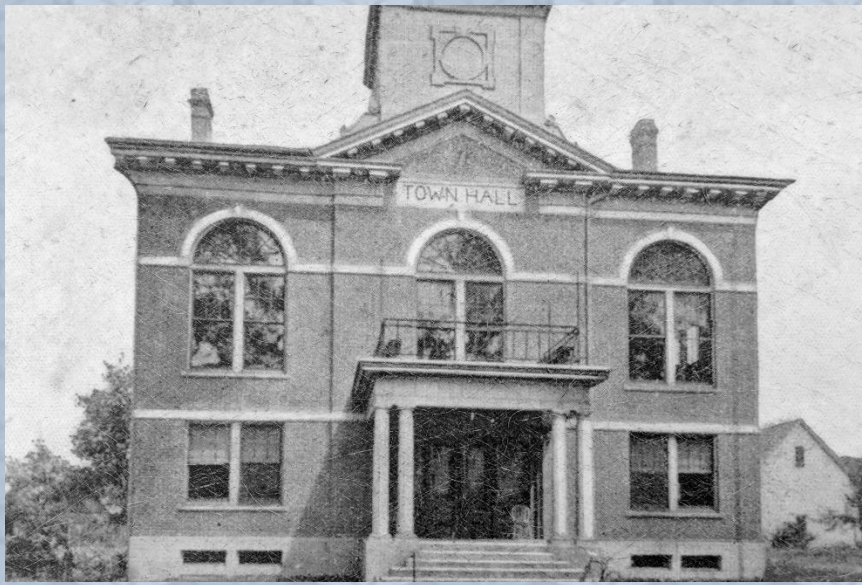


Fairport, New York

100th BLC Anniversary

Rooted in Christ — Growing in Faith — Sharing His Love





Some early worship services were in the town hall

Worship services were also held in the upstairs of the Bown building (*dark building next to drug store*)

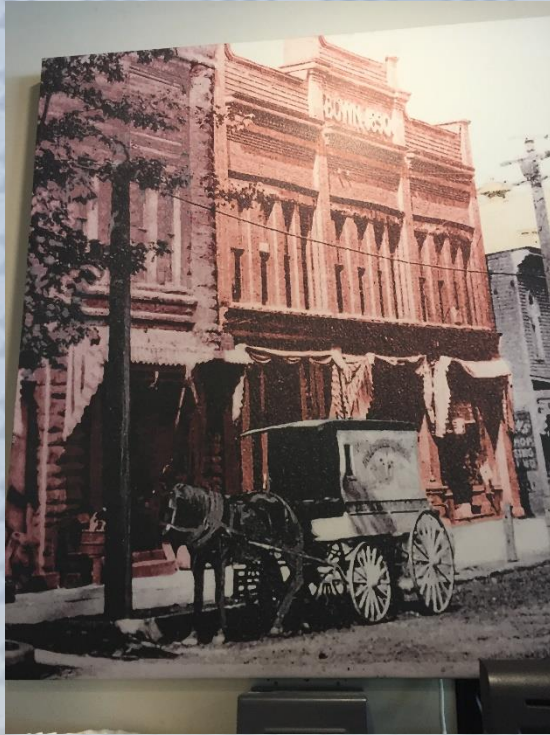


100th BLC Anniversary

Rooted in Christ — Growing in Faith — Sharing His Love

Rooted Growing Sharing
BETHLEHEM
 LUTHERAN CHURCH
 100 YEARS | 1921-2021

Bown Building 1920s



Bown Building 1950s



100th BLC Anniversary

Rooted in Christ — Growing in Faith — Sharing His Love

Rooted Growing Sharing
BETHLEHEM
LUTHERAN CHURCH
100 YEARS | 1921-2021



Built Bethlehem Evangelical Lutheran
Church in 1922-23



100th BLC Anniversary

Rooted in Christ — Growing in Faith — Sharing His Love

Rooted Growing Sharing
BETHLEHEM
LUTHERAN CHURCH
100^{YEARS} | 1921-2021



Early Bethlehem Lutheran Church



100th BLC Anniversary

Rooted in Christ — Growing in Faith — Sharing His Love

Rooted Growing Sharing
BETHLEHEM
LUTHERAN CHURCH
100 YEARS | 1921-2021



Sunday School Parish House

Church Wing & Ramp



100th BLC Anniversary

Rooted in Christ — Growing in Faith — Sharing His Love

Rooted Growing Sharing
BETHLEHEM
LUTHERAN CHURCH
100 YEARS 1921-2021



Early Sanctuary



Early Sanctuary

100th BLC Anniversary

Rooted in Christ — Growing in Faith — Sharing His Love

Rooted Growing Sharing
BETHLEHEM
LUTHERAN CHURCH
100 YEARS 1921-2021



Early Sanctuary

Early Sanctuary



100th BLC Anniversary

Rooted in Christ — Growing in Faith — Sharing His Love

Rooted | Growing | Sharing
BETHLEHEM
 LUTHERAN CHURCH
 100 YEARS | 1921-2021



Today's Sanctuary

Today's Sanctuary



100th BLC Anniversary

Rooted in Christ — Growing in Faith — Sharing His Love

Rooted | Growing | Sharing
BETHLEHEM
 LUTHERAN CHURCH
 100 YEARS | 1921-2021



Today's Sanctuary



Today's Sanctuary

100th BLC Anniversary

Rooted in Christ — Growing in Faith — Sharing His Love

Rooted | Growing | Sharing
BETHLEHEM
 LUTHERAN CHURCH
 100 YEARS | 1921-2021



Bethlehem Brotherhood

Ladies Aid Society



100th BLC Anniversary

Rooted in Christ — Growing in Faith — Sharing His Love

Rooted Growing Sharing
BETHLEHEM
LUTHERAN CHURCH
100 YEARS | 1921-2021



Rev. Claude Tejan

Rev. Wilbur Lindsley & family



100th BLC Anniversary

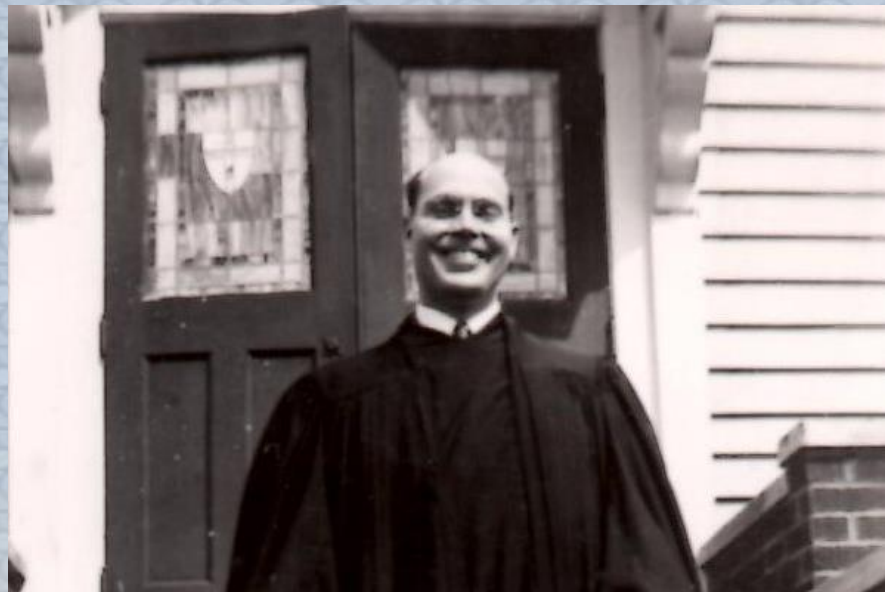
Rooted in Christ — Growing in Faith — Sharing His Love

Rooted Growing Sharing
BETHLEHEM
LUTHERAN CHURCH
100 YEARS | 1921-2021



Rev. Dallas Alder

Rev. Claude Tejan



100th BLC Anniversary

Rooted in Christ — Growing in Faith — Sharing His Love

Rooted Growing Sharing
BETHLEHEM
LUTHERAN CHURCH
100 YEARS | 1921-2021



1923 Baptismal Font

Charter Members Signatures

Elizabeth B. Priest
 Olga E. Sutton. ✓
 H. D. Stiffen ✓
 Mirra D. Steffen ✓
 Carl F. Bauer ✓
 Frederica Bauer ✓
 Anna E. Pissick ✓
 Mary Jakob ✓
 Charles Broder ✓
 Minnie Broder ✓
 Charles Priest ✓
 Ida Priest ✓
 Lillie Schroeder ✓
 Charles Schrader ✓
 Mrs. Chas. Gipe ✓
 Howard Gipe ✓
 Julia C. Lude ✓
 Hathi E. Wood ✓
 Charlotte Bandholz ✓
 Grace Lude ✓

100th BLC Anniversary

Rooted in Christ — Growing in Faith — Sharing His Love





Rev. Rehkopf – Rev. Hembrock – Rev. Adler
- unknown



100th BLC Anniversary

Rooted in Christ — Growing in Faith — Sharing His Love

Rooted Growing Sharing
BETHLEHEM
LUTHERAN CHURCH
100th YEAR | 1921-2021



Early Choirs



100th BLC Anniversary

Rooted in Christ — Growing in Faith — Sharing His Love

Rooted Growing Sharing
BETHLEHEM
 LUTHERAN CHURCH
 100 YEARS | 1921-2021



Early Choirs



100th BLC Anniversary

Rooted in Christ — Growing in Faith — Sharing His Love

Rooted Growing Sharing
BETHLEHEM
 LUTHERAN CHURCH
 100 YEARS | 1921-2021



Confirmation Class



Rev. Tejan & Confirmation Class 1940

100th BLC Anniversary

Rooted in Christ — Growing in Faith — Sharing His Love

Rooted Growing Sharing
BETHLEHEM
 LUTHERAN CHURCH
 100 YEARS | 1921-2021



50th Anniversary – attending Pastors

Front: Donald Rehkopf Claude Tejan Arnold Roesener

Rear: Herman Jorgensen Dallas Adler Carl Adler Richard Hembrock

50th Anniversary

Mrs. Robert Oppelt & Rev. Jorgensen



100th BLC Anniversary

Rooted in Christ — Growing in Faith — Sharing His Love

Rooted Growing Sharing
BETHLEHEM
 LUTHERAN CHURCH
 100 YEARS | 1921-2021



Rev & Dagny Jorgensen

100th BLC Anniversary

Rooted in Christ — Growing in Faith — Sharing His Love

Rooted Growing Sharing
BETHLEHEM
LUTHERAN CHURCH
100^{YEARS} | 1921-2021



Early BLC Members



100th BLC Anniversary

Rooted in Christ — Growing in Faith — Sharing His Love

Rooted Growing Sharing
BETHLEHEM
LUTHERAN CHURCH
100^{YEARS} | 1921-2021



BLC Picnic at Salem Park

Rev. Tejan & family



100th BLC Anniversary

Rooted in Christ — Growing in Faith — Sharing His Love

Rooted Growing Sharing
BETHLEHEM
LUTHERAN CHURCH
100^{YEARS} | 1921-2021



Rev. Schulz's Family

Luther League



100th BLC Anniversary

Rooted in Christ — Growing in Faith — Sharing His Love

Rooted Growing Sharing
BETHLEHEM
 LUTHERAN CHURCH
 100 YEARS | 1921-2021



Rev. Tejan & Members

Early Luther Leaguers



100th BLC Anniversary

Rooted in Christ — Growing in Faith — Sharing His Love

Rooted Growing Sharing
BETHLEHEM
 LUTHERAN CHURCH
 100 YEARS | 1921-2021

Early BLC Members



100th BLC Anniversary

Rooted in Christ — Growing in Faith — Sharing His Love

Rooted Growing Sharing
BETHLEHEM
LUTHERAN CHURCH
100th YEAR | 1921-2021



Rev. Adler & Members

BLC Members



100th BLC Anniversary

Rooted in Christ — Growing in Faith — Sharing His Love





BLC Ladies Event

BLC Potluck



100th BLC Anniversary

Rooted in Christ — Growing in Faith — Sharing His Love

Rooted Growing Sharing
BETHLEHEM
LUTHERAN CHURCH
100^{YEARS} | 1921-2021



BLC Quartet

Rev. Schulz & Confirmation Class - 1931



100th BLC Anniversary

Rooted in Christ — Growing in Faith — Sharing His Love

Rooted Growing Sharing
BETHLEHEM
LUTHERAN CHURCH
100 YEARS | 1921-2021



BLC Production

BLC Production



100th BLC Anniversary

Rooted in Christ — Growing in Faith — Sharing His Love

Rooted Growing Sharing
BETHLEHEM
 LUTHERAN CHURCH
 100th YEARS | 1921-2021



BLC 50th Anniversary



BLC 50th Anniversary

100th BLC Anniversary

Rooted in Christ — Growing in Faith — Sharing His Love

Rooted | Growing | Sharing
BETHLEHEM
 LUTHERAN CHURCH
 100 YEARS | 1921-2021



German Band

Marge Adler Director



100th BLC Anniversary

Rooted in Christ — Growing in Faith — Sharing His Love

Rooted Growing Sharing
BETHLEHEM
 LUTHERAN CHURCH
 100 YEARS | 1921-2021



BLC Manger

Hawaiian Night 1966



100th BLC Anniversary

Rooted in Christ — Growing in Faith — Sharing His Love

Rooted | Growing | Sharing
BETHLEHEM
 LUTHERAN CHURCH
 100th YEAR | 1921-2021



1959 BLC Float

1965 BLC Float



100th BLC Anniversary

Rooted in Christ — Growing in Faith — Sharing His Love

Rooted | Growing | Sharing
BETHLEHEM
 LUTHERAN CHURCH
 100 YEARS | 1921-2021



Other BLC Floats



100th BLC Anniversary

Rooted in Christ — Growing in Faith — Sharing His Love

Rooted Growing Sharing
BETHLEHEM
 LUTHERAN CHURCH
 100 YEARS | 1921-2021



Adler Singers

Cherub Choir



100th BLC Anniversary

Rooted in Christ — Growing in Faith — Sharing His Love

Rooted Growing Sharing
BETHLEHEM
LUTHERAN CHURCH
100 YEARS | 1921-2021

Anniversary by Dedication New Sanctuary, Window, Organ

In observance of the tenth anniversary of its founding, Bethlehem Evangelical Lutheran church in West Church street was the scene of special services on Sunday, in charge of the pastor, Rev. Henry D. Schulz, who is the only pastor to have served the church, his service covering a period of almost ten years.

It was on the 28th of July, 1921, that the church organization was started with six members, through the efforts of Rev. W. G. Hoffman, at that time pastor of the Lutheran

pulpit has been re-located, and the altar at the rear has been raised six inches.

New Pipe Organ

But to the observer, perhaps the most notable improvement is the installation of a new Wicks two-manual pipe organ, which was used for the first time at the Sunday services. In the hands of the organist, Miss Edith Bandhold, the beauties of the organ's tones, and its flexibility in aiding the service was brought out at the Sunday services. Also, the choir of a dozen voices appeared on Sunday for the first time in their new vestments.

BLC News

Bethlehem Lutheran, Fairport, Celebrates 30th Anniversary of Laying of Cornerstone

By DON YERGER

Times-Union Church Editor

Bethlehem Evangelical Lutheran Church, Fairport, will celebrate the 30th anniversary of the laying of the cornerstone, with an elaborate series of events and programs this weekend.

Tonight at 6:30 a reunion dinner and entertainment will be held at the church, Perrin and Church sts. Dinner speaker will be the Rev. Herbert E. Plehn, pastor of St. Matthew's Lutheran Church, Rochester.

Acting as toastmaster will be the Rev. Claude E. Tejan, pastor of the Fairport church from 1936 to 1944, now minister of Trinity Church, Pittsburgh.

Three former pastors will participate in special services tomorrow.

At 9:30 a. m., Holy Communion will be observed with the sermon by the Rev. H. D. Schulz, now of Sugar Grove, West Va., who served the congregation from 1922 to 1936. The Rev. Mr. Schulz was pastor when the original cornerstone laying ceremonies were held Aug. 20, 1922.

A reunion service will be held tomorrow at 3 p. m., featuring an address by the Rev. W. G. Hoffmann, church founder and organizer, now pastor of Immanuel Church, Cissna Park, Ill.

A vesper series tomorrow at 8 p. m. will be highlighted by an



DOWN PAYMENT — Lawrence W. Mosher, 1 for purchase of a house and lot adjacent

100th BLC Anniversary

Rooted in Christ — Growing in Faith — Sharing His Love

Rooted Growing Sharing

BETHLEHEM
LUTHERAN CHURCH

100 YEARS 1921-2021

IN PREPARATION for the anniversary celebration, members, through voluntary contributions, raised \$1,000 to purchase a new maroon carpet for the Sanctuary floor.

Other gifts to be dedicated by the Rev. Mr. Rehkopf tomorrow include: A missal stand, donated in memory of Horatio Spafford by Mrs. Spafford; communion candles, in memory of Ernest Bandhold by Mrs. Anna Bandhold, Charlotte and Edith; a credence table, made by Donovan Boas in honor of those who served in World War 2 and the Korean war; an offering receiving basin by the Adult Fellowship and a dozen hymnals, donated by the Brotherhood.

It was the Rev. Mr. Rehkopf who gave the Fairport congregation its slogan: "Lutheran Church of the Hour." (The words appear each Sunday on the church's bulletin.)

"I chose the slogan as a fitting one to promote a program of expansion and growth in the church," he explained.

The church this week acquired an adjacent two-story frame house and lot on the Perrin St. side with future expansion in mind. The additional property was purchased from Mrs. James Roberts at a cost of \$14,000.

The house will be used as a parsonage for the Rev. Mr. Rehkopf, his wife and son, Donald George Rehkopf, 2 years old. The present parsonage will be sold.

In the not too distant future, the church hopes to erect a parish hall on the lot space to provide additional quarters for an overworked

tendence.

"It was vastly different from the 400 who were in the habit of attending the large church in Columbus, Ohio—St. Peter's—where I served two years previous as student assistant," he opined.

The cleric pointed out, however, that attendance and new members at the Fairport Church are increasing steadily. In connection with the 30th anniversary celebration, 30 new parishioners were welcomed into membership last Sunday.

• • •
 QUERIED as to his chief aims for the future of the Fairport congregation, the Rev. Mr. Rehkopf said:

"I hope to inaugurate an effective program of lay evangelism through which all the Lutherans in the vicinity would be contacted and invited to participate in the program of the church."

"I think the Church School attendance could be readily increased to 200 if space would be available to accommodate them."

The cleric explained that no effort has been made to expand the Church School because with an enrollment of 100 the maximum that can be cared for has been reached.

At present, 18 St. Andrew's Lutheran Church School sessions each Sunday, he said, and the building is bulging at the seams to accommodate them. Howard Luke is superintendent and 16 teachers volunteer their services.

The Rev. Mr. Rehkopf's credo is: "A minister should be a teacher as well as preacher."
 "I hope to place increasing

Adult Fellowship of 40 members which is extremely active in working for the welfare of the church. Anne Miller is president of the group which raises funds for the church by holding sales, suppers and the like. They meet monthly for devotions, business sessions and recreation.

Junior Lutherans, an organization for youngsters from 10 to 14 years of age, is headed by Anne Priest. The 30 members meet the third Sunday night of each month for a four-fold program of worship, work, education and recreation. A Senior Luther League is in the process of reorganization.

The Men's Brotherhood, affiliated with the National Brotherhood of the American Lutheran Church, has 20 members and is headed by Hugh Brown. The men meet monthly at the church for dinner meetings and often book guest speakers on current problems of the day.

A Women's Missionary Society, Mrs. Helen Spafford, president, has 30 members. Affiliated with the Women's Missionary Society of the ALC, its aim is to aid the cause of foreign and home missions and benevolent work of the church.

The women offer, and gifts and supplies to the Rev. Paul Scholz, a native son of the church, now an ALC missionary in Madang, New Guinea.

They meet the first Wednesday night of each month for devotionals, business sessions and recreation.

A group of 15 comprise the Nursery Mothers' Club. The women take turns supervising the nursery on

corporated Aug. 20, 1922, had its beginnings back in July, 1921 when a small band of persons of Lutheran faith residing in Fairport secured the help of the Rev. W. G. Hoffmann, then pastor of the Lutheran Church in Roseland, to organize a congregation.

The first meeting was held July 28, 1921 in the Grange Hall. First officers were elected Aug. 4, 1921, at a second meeting.

The first worship service was held Aug. 7, the same year, with the Rev. Mr. Hoffmann conducting the rites.

The present church site was purchased Oct. 26, 1921. On Jan. 22, 1922, the first pastor, the Rev. Mr. Schulz, was installed. The congregation met in the Bown Block until the present church was dedicated Mar. 11, 1923.

The speaker at the first cornerstone laying ceremonies was the late Dr. C. N. Conrad, then pastor of Concordia Lutheran Church, Rochester.

In 1933, the interior of the Sanctuary was remodeled and an arched chancel, electric organ and choir loft installed.

• • •
 THE REV. MR. REHKOPF is a native of Neustadt, Ontario, Canada. Three years ago he applied for citizenship papers and hopes to become an American citizen the end of this month.

He was graduated in 1943 from State Teachers' College, Stratford, Ont. He served for three years as school principal at Ayrton, Ont., to

BLC News

the Laying of the Cornerstone will be celebrated.

Three former pastors of the church will participate in the services to be held Sunday,

Aug. 17. At 9:30 a.m. a Communion Service will be observed with sermon by the Rev. H. D. Schulz, Sugar Grove, W. Va., who served the local church from 1922 to 1936 and was the pastor when the original cornerstone laying ceremonies took place.

At the morning service also, the following furnishings which have been donated to the church will be dedicated: A Missal Stand donated in memory of Horatio Spafford by Mrs. Horatio Spafford; Communion Candlesticks given by the Bandhold family in memory of Ernest Bandhold; Receiving Basin which all members and friends

installed a rug in the chancel and nave of the church.
 A Reunion Service will be held at 3 p.m. at which time the Rev. W. G. Hoffman, Church founder and organizer, now of Immanuel Church, Cissna Park, Ill., will bring the message.

The Vesper Service at 8 p.m. will be conducted with sermon by the Rev. C. E. Tejan, Trinity Church, Pittsburgh, Pa., who was pastor of the local church from 1936 to 1944.

Saturday, Aug. 16 at 6:30 p.m. there will be a reunion dinner and entertainment at the Church, to

a gift of the Adult Fellowship have been invited

100th BLC Anniversary

Rooted in Christ — Growing in Faith — Sharing His Love

Rooted Growing Sharing

BETHLEHEM
LUTHERAN CHURCH

100 YEARS 1921-2021

The Brook's Home, located on the north-west corner of Perrin and Church Streets, for many years has been a community landmark. It was built in 1879 as the home of Mr. and Mrs. Garry Brooks. The property originally extended to the old Church Street School and down Perrin Street to the Chadwick property. The land included the present site of Bethlehem Ev. Lutheran Church and the Lutheran Parsonage. A photo taken in 1879 shows the property was originally surrounded by a picket fence.

After the death of Mr. Garry Brooks in 1902, the property passed on to his two sons and one daughter who, after litigation, sold it to Mr. McCartney, a brother-in-

*Torn down
8/1970.*

BLC Parish House Torn Down



100th BLC Anniversary

Rooted in Christ — Growing in Faith — Sharing His Love

Rooted Growing Sharing

BETHLEHEM
LUTHERAN CHURCH

100 YEARS | 1921-2021



1962 SS Kindergarten

1962 – 6th SS – Hugh Brown



100th BLC Anniversary

Rooted in Christ — Growing in Faith — Sharing His Love

Rooted Growing Sharing
BETHLEHEM
 LUTHERAN CHURCH
 100 YEARS | 1921-2021



1962 – 4th SS – Gladys Miller

1962 SS Opening Songs



100th BLC Anniversary

Rooted in Christ — Growing in Faith — Sharing His Love

Rooted Growing Sharing
BETHLEHEM
 LUTHERAN CHURCH
 100 YEARS | 1921-2021



1962 SS Officers

1962 – 9th SS – Roy G



100th BLC Anniversary

Rooted in Christ — Growing in Faith — Sharing His Love

Rooted Growing Sharing
BETHLEHEM
 LUTHERAN CHURCH
 100 YEARS | 1921-2021



1966 – 7th Grade SS – Sam Berkley



1966 – 2nd Grade SS – Jo Bieler

100th BLC Anniversary

Rooted in Christ — Growing in Faith — Sharing His Love

Rooted | Growing | Sharing
BETHLEHEM
 LUTHERAN CHURCH
 100 YEARS | 1921-2021



1966 – 5th Grade SS – Vi Raymond

1966 – 8th Grade SS – Al Vokes



100th BLC Anniversary

Rooted in Christ — Growing in Faith — Sharing His Love

Rooted Growing Sharing
BETHLEHEM
 LUTHERAN CHURCH
 100 YEARS | 1921-2021



1966 – Sr. High SS - Dick Corbin

1966 SS Officers



100th BLC Anniversary

Rooted in Christ — Growing in Faith — Sharing His Love

Rooted Growing Sharing
BETHLEHEM
 LUTHERAN CHURCH
 100th YEAR | 1921-2021



1963 –SS Christmas Program

1963 –SS Christmas Program



100th BLC Anniversary

Rooted in Christ — Growing in Faith — Sharing His Love

Rooted Growing Sharing
BETHLEHEM
LUTHERAN CHURCH
100 YEARS 1921-2021



1963 –SS Christmas Program

100th BLC Anniversary

Rooted in Christ — Growing in Faith — Sharing His Love

Rooted Growing Sharing
BETHLEHEM
LUTHERAN CHURCH
100 YEARS | 1921-2021

1979 – Homsombath Family



1979 – Homsombath Family



100th BLC Anniversary

Rooted in Christ — Growing in Faith — Sharing His Love

Rooted Growing Sharing
BETHLEHEM
LUTHERAN CHURCH
100 YEARS | 1921-2021

BLC is Rooted in Christ – Growing in Faith & always Sharing His love!

Our first 100th years is rich in history and abundant in blessings.

Our future depends on what we do in the present. We are poised for some very fruitful years ahead.

May we always do the will of God! And love as we have been loved!



100th BLC Anniversary

Rooted in Christ — Growing in Faith — Sharing His Love

